

NOTES

- a) The NLP excludes burial plots, cinerary urn compartments, pedestal for ancestral tablet and construction of tomb.
- b) Use of parlour is subject to availability. The parlour check-in policy and procedures may vary by location; hence the customer must agree to such policy and procedures of respective location before the parlour check-in is allowed.
- c) The NLP shall be exercised strictly in Peninsular Malaysia where the location of the funeral service must be within the radius of 35km (hereinafter referred to as "the Restricted Territory") either from Nirvana Care Sdn Bhd (hereinafter referred to as "Nirvana Care") or its associate company's service center. Nirvana Care or its associate company reserves the rights to impose additional charges for funeral service held beyond the Restricted Territory.
- d)** The company shall not be liable for any direct, indirect or consequential losses in the event that the specified hearse or vehicle is not available as a result of circumstances beyond its control PROVIDED ALWAYS that an alternative mode of conveyance or transport is made available.
- e) No refund or return of the items in the package shall be allowed under any whatsoever circumstances.
- f) Additional nights and/or additional items are subject to additional charges.
- g) Any fees related to burial incurred at customer's selected cemetery (hereinafter referred to as "the Said Cemetery") other than Nirvana Memorial Park shall be borne by customer solely and is payable directly to the Said Cemetery.
- h) In the event of any conflict or inconsistency between the provisions of the Purchase Order and these Notes, these Notes shall prevail to the extent of such inconsistency.
- i) The terms and conditions in English language shall prevail over Chinese language should any conflict arise in the interpretation of the terms and conditions herein.

* All drawings and images are artistic impressions only, and any furniture shown is for illustration purpose only.
* For full detail terms and conditions, please refer to the respective purchase orders.

註釋

- a) 此富貴生命圓滿契約殯儀套餐不包括福地、骨灰龕位、神主牌位及墓碑建設。
- b) 追思禮堂之履約使用須依當時情況調度之。追思禮堂使用條款將會有地域性的差異，客戶須同意有關條款後方能使用追思禮堂。
- c) 本契約僅限於馬來西亞半島履約。實際履約範圍以本公司（或與本公司合作的聯號公司）所設服務中心為圓心，半徑35公里以內為局限（以下簡稱“局限範圍”）。若超出上述局限範圍，須依實際距離與服務，額外加付相關費用。
- d)** 本契約所列交通或運輸工具，若因本公司無可預測或無法控制的情況而無法完成被使用，本公司有權以其他交通或運輸方式代替，無需承擔任何責任。
- e) 不論在任何情況之下，所購契約或契約內的服務或物品不能退回。
- f) 非本契約載明之服務內容，均須額外付費。
- g) 富貴山莊以外之其他安息地，若有非本契約所列之其他安葬相關費用，請客戶直接與該安息地之負責單位付洽。
- h) 如認購書和註釋有不符的地方，將以註釋的條款詮釋為標準。
- i) 如對上述規則與條件之中文譯本，產生任何詮釋上的爭議，將以英文譯本為詮釋標準。

* 本手冊圖案及相片乃屬構思圖而已。
* 請參閱有關認購書以了解條規的詳情。

NIRVANA care SDN BHD
富貴關懷有限公司 (451196-D)

Nirvana Memorial Center
No. 1, Jalan 1/116A, Off Jalan Sungai Besi
57100 Kuala Lumpur, Malaysia

Careline: **1800 88 1818**
www.nirvana.com.my

NV
**GRACIOUS
BLESSING**

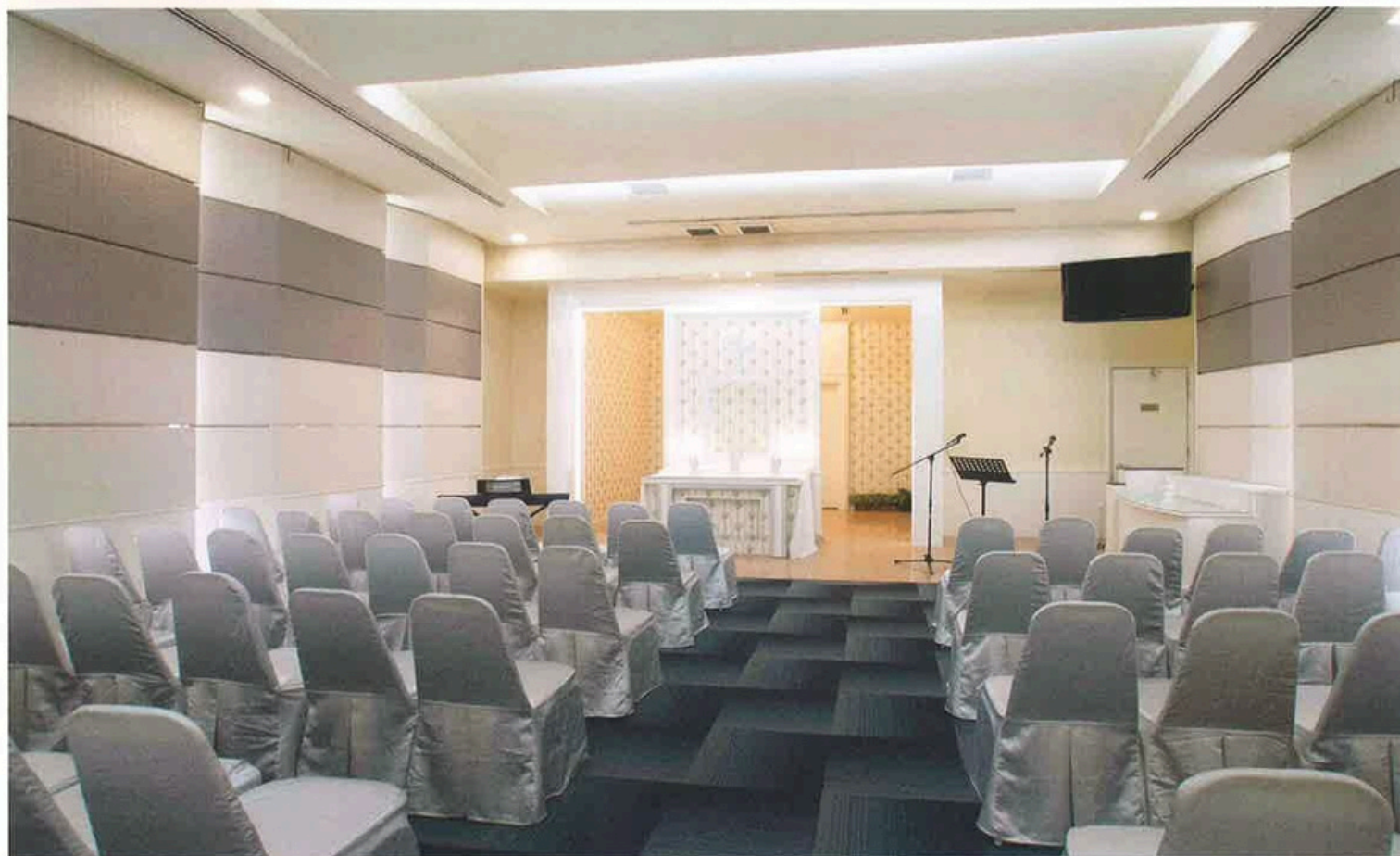


富貴
聖恩 ◊ 祝福



NIRVANA LIFE PLAN
生命圓滿契約

We care. We provide. 心靈深處的關懷



Grand Memorial Parlour

現代化追思禮堂



Standard NV Blessing casket
標準祝福土葬壽木



Premium NV Gracious casket & urn 精緻聖恩土葬壽木&骨灰罈

* Floral decorations available with upgrades 花藝佈置僅限升級配製

Our Services 我們的服務

We advise, arrange and supervise funeral arrangements, covering all aspects with staff support. We dedicate our diligence right from the beginning to the funeral day, and any further help required thereafter.

一場莊嚴的告別儀式，承載了對摯親的哀思，承載著深深的祝福，身為這道關卡的守門人，富貴禮儀團隊一直秉持“事死如事生”的專業態度，從防腐、淨身、化妝、入殮至追思禮拜，我們堅持給予您的摯親至高無上的尊重，務求以最貼心的服務品質以及匠心的產品素質禮讚生命。

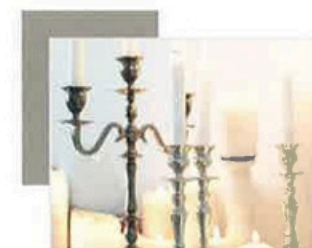
White Ladies 白衣天使

The 1st of its kind in Malaysia, our professional all female service staff, dedicated to rendering their immaculate services with a genuine sincerity for female decedents.

全馬首創專業的白衣天使將全程處理女性遺體，從防腐、淨身、化妝和入殮的工作，給予女性逝者至高無上的尊重。



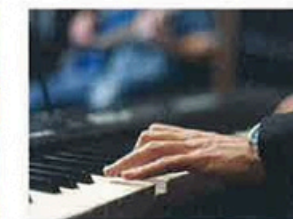
*White Ladies service is available within "the Restricted Territory" only
白衣天使服務只限於“局限範圍”內



Candles
蠟燭



Hymn book, cross
聖詩手冊，十字架



Professional music band
專業音樂隊



High range hearse
高級靈車
NV GRACIOUS
富貴聖恩



Standard hearse
標準舒適靈車
NV BLESSING
富貴祝福



Luxurious limousine
豪華禮車
NV GRACIOUS
富貴聖恩



富貴 NIRVANA
生命圓滿契約

	富貴祝福	富貴聖恩
臨終諮詢		
1. 提供24小時臨終禮儀諮詢	✓	✓
遺體處理與入殮服務		
2. 申領死亡與下葬證明書	✓	✓
3. 遺體接送	✓	✓
4. 遺體護理服務 (防腐、化妝)	✓	✓
5. (i) 土葬 : 土葬壽木 (1副)	標準祝福土葬壽木	精緻聖恩土葬壽木
(ii) *火化 : 火化壽木 (1副)	標準祝福火化壽木	精緻聖恩火化壽木
*骨灰罈 (1個)	標準祝福骨灰罈	精緻聖恩骨灰罈
*火化與拾骨灰服務	✓	✓
6. 十字被 (1套)	✓	✓
奠禮準備		
7. 使用特色大櫛/標準追思禮堂	1個16尺X20尺 / 標準追思禮堂	2個16尺X20尺 / 標準追思禮堂
• 風扇(把)	4	8
• 燈(盞)	4	8
• 附桌布桌子(套)	8	12
• 椅子(張)	60	120
8. 使用莊嚴靈堂	✓	✓
9. 遺照放大服務	✓	✓
10. 精緻相框	✓	✓
11. 花團錦簇	-	✓
12. 靈桌及棺頂花飾 (1套)	✓	✓
13. 蠟燭, 十字架	✓	✓
14. 使用聖詩手冊	-	✓
15. 路向指標	✓	✓
16. 弔唁禮簿	✓	✓
17. 帛金箱	✓	✓
治喪協調與奠禮進行		
18. 專業治喪諮詢及服務人員 (1組)	✓	✓
19. 殯儀協調人員2晚 (6PM - 12AM)	1位殯儀協調人員 / 晚間	1位殯儀協調人員 / 晚間
20. 糖果禮品 (份)	✓	✓
21. 使用音響系統	✓	✓
22. 使用電子琴鍵	✓	✓
23. 熱飲 (咖啡與茶)	多達30人份 / 晚間	-
24. *** 備辦輕便茶點	-	多達30人份 / 晚間
25. 飲用水 (杯)	240	480
26. 花生 (包)	30	40
舉殯服務		
27. 大殮封棺	✓	✓
28. 舉殯服務人員 (1組)	✓	✓
29. 富貴精緻答禮品 (件)	40	100
30. ** 禮車 (1輛, 單程使用)	-	豪華禮車
31. ** 靈車 (1輛, 單程使用)	標準舒適靈車	高級靈車
32. ** 送殯冷氣巴士 (1輛)	-	多達40人座位
額外產品與服務		
33. 追思相片隨身碟	-	1個 (40張)
34. 致謝卡(張)	100	200
	RM 17,800 (即用價格)	RM 22,300 (即用價格)
	RM 15,800 (預售價格)	RM 19,800 (預售價格)

* 僅限於火化配置。
** 本契約所列交通或運輸工具, 若因本公司無可預測或無法控制的情況而無法完成被使用, 本公司有權以其他交通或運輸方式代替, 無需承擔任何責任。
*** 僅限於“局限範圍”內。



富貴 NIRVANA
NIRVANA
LIFE PLAN

	NV Blessing	MOST POPULAR NV Gracious
Consultation		
1. 24-Hour Careline Service for Consultation Prior to Demise	✓	✓
Embalming Handling & Encoffinment Service		
2. Reporting Death & Obtaining Burial Clearance / Permit	✓	✓
3. Securing Release of Remains	✓	✓
4. Decedent Care Services (Embalming / Dry Ice & Make Up)	✓	✓
5. (i) Burial : Burial Casket (1 Unit)	Standard NV Blessing Casket	Premium NV Gracious Casket
(ii) * Cremation : Cremation Casket (1 Unit)	Standard NV Blessing Cremation Casket	Premium NV Gracious Cremation Casket
* Urn (1 Unit)	Standard NV Blessing Urn	Premium NV Gracious Urn
* Cremation & Retrieval of Ashes	✓	✓
6. *Cross* Blanket (1 Set)	✓	✓
Preparation of Memorial Ceremony		
7. Use of Canopy / Parlour	1 Unit (16ft X 20ft) / Standard Parlour	2 Unit (16ft X 20ft) / Standard Parlour
• Hanging Fan (Unit)	4	8
• Light (Unit)	4	8
• Table with Table Cloth (Set)	8	12
• Plastic Chair (Unit)	60	120
8. Use of Majestic Altar	✓	✓
9. Enlargement of Photograph	✓	✓
10. Decorated Photo Frame	✓	✓
11. Floral Ornament	-	✓
12. Table & Casket Top Floral Decoration (1 Set)	✓	✓
13. Candles & Cross	✓	✓
14. Use of Hymn Books	-	✓
15. Location Direction Placards	✓	✓
16. Memorial Record Book	✓	✓
17. Use of Condolence Box	✓	✓
Coordination of Funeral Service & Memorial Ceremony		
18. Professional Consultation & Support Team (1 Team)	✓	✓
19. 2 Nights Wake Service Worker (6PM - 12AM)	1 Worker / Night	1 Worker / Night
20. Confectionery Gifts	✓	✓
21. Use of PA System	✓	✓
22. Use of Electronic Keyboard	✓	✓
23. Hot Beverages (Coffee & Tea)	Up To 30 Pax / Night	-
24. *** Light Refreshment & Hot Beverages	-	Up To 30 Pax / Night
25. Drinking Water (Cup)	240	480
26. Peanuts (Package)	30	40
Funeral Procession Service		
27. Sealing of Casket	✓	✓
28. Service Team for Funeral Procession (1 Team)	✓	✓
29. NV Souvenir (Piece)	40	100
30. ** Use of Limousine (1 Unit, Single Trip)	-	Luxurious Limousine
31. ** Use of Hearse (1 Unit, Single Trip)	Standard Hearse	High Range Hearse
32. ** Use of Air-Cond Bus for Funeral Procession (1 Unit)	-	Up To 40 Seats
Additional Products & Services		
33. USB Flash Drive with Pieces of Photo	-	1 Unit (40 Pieces)
34. Thank You Cards (Unit)	100	200
	RM 17,800 (As-Need Price)	RM 22,300 (As-Need Price)
	RM 15,800 (Pre-Need Price)	RM 19,800 (Pre-Need Price)

* Applicable for cremation package only.
** The company shall not be liable for any direct, indirect or consequential losses in the event that the specified hearse or vehicle is not available as a result of circumstances beyond its control PROVIDED ALWAYS that an alternative mode of conveyance or transport is made available.
*** Applicable in "the Restricted Territory" only.